



Libra Systems

Internal Partition Res Bar One Side Details

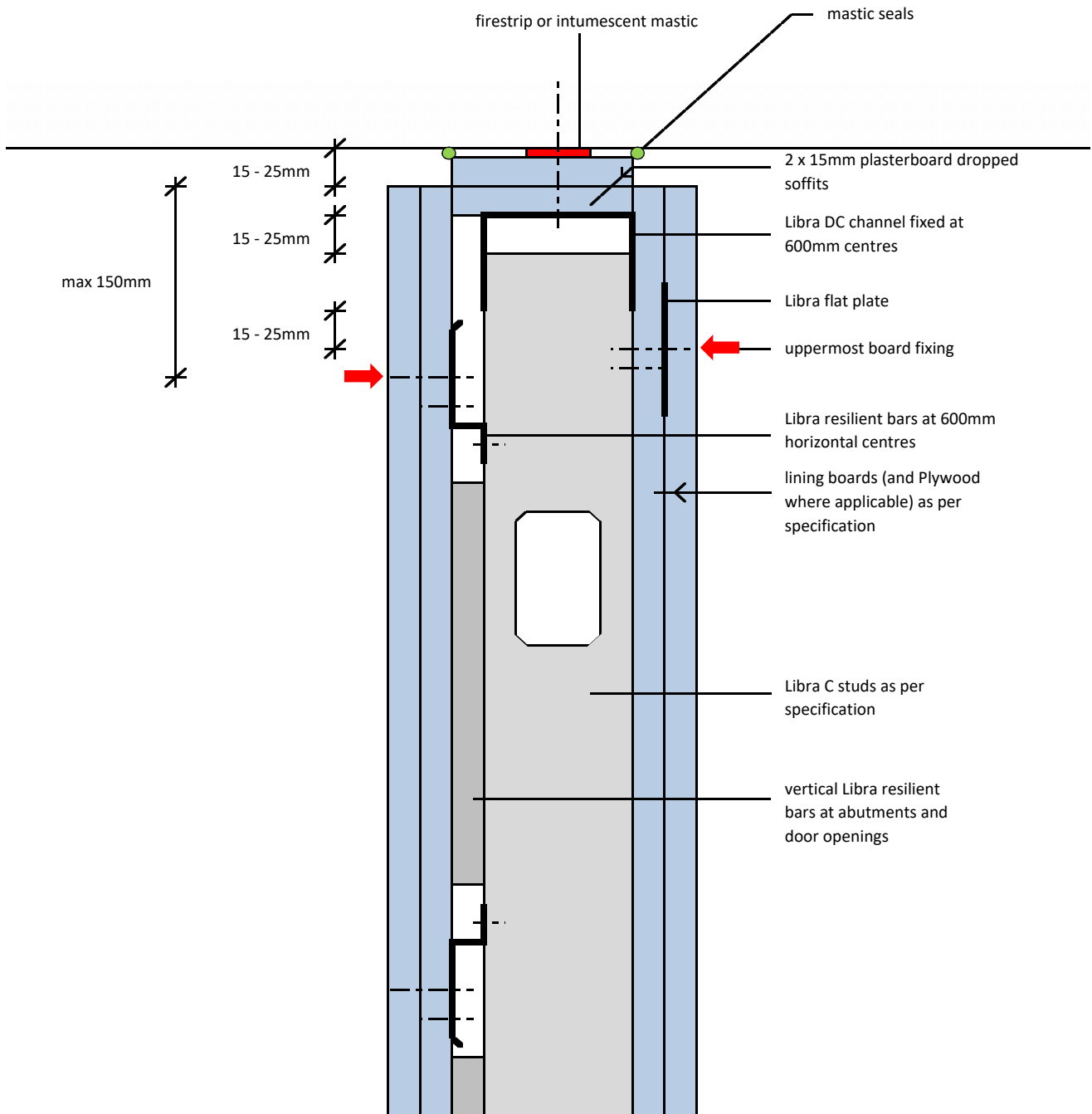


Contents

Metal Stud Partition System (Res-Bar one side)

ML/TYP/120	15 - 25mm / 30 or 60 minute deflection
ML/TYP/121	base detail
ML/TYP/122	internal corner detail
ML/TYP/123	external corner detail
ML/TYP/124	abutment detail
ML/TYP/125	T Junction
ML/TYP/126	horizontal joint
ML/TYP/127	heavy / severe door opening
ML/TYP/128	heavy /severe door opening - section AA
ML/TYP/129	party wall /SFS abutment option A
ML/TYP/130	party wall /SFS abutment option B
ML/TYP/131	party wall T Junction

resilient bar partition (one side)
15 - 25mm / 30 or 60 minute deflection head



Notes: This drawing should be read in conjunction with the relevant sections of the manufacturers current product literature we would draw your attention to the Construction (Design and Management) Regulations 1994 and the Approved Code of Practice which detail the legal duties of clients, client's agents designers and contractors involved in construction projects.

for discussion purposes only / do not scale



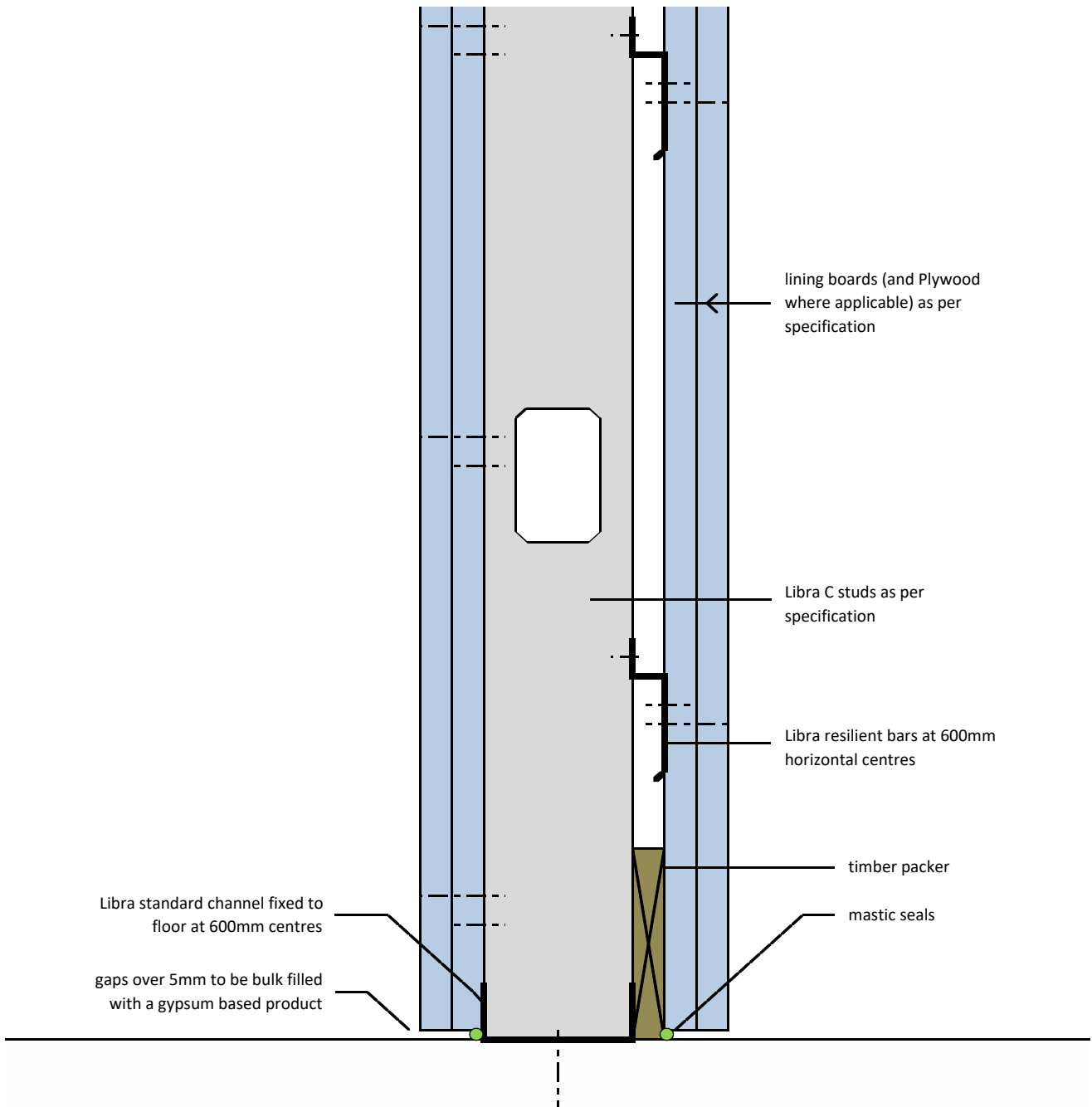
project: Typical Detail

initials: ML

date: 01/03/2017

drg no: ML/TYP/120

**resilient bar partition (one side)
base detail**



Notes: This drawing should be read in conjunction with the relevant sections of the manufacturers current product literature we would draw your attention to the Construction (Design and Management) Regulations 1994 and the Approved Code of Practice which detail the legal duties of clients, client's agents designers and contractors involved in construction projects.

for discussion purposes only / do not scale



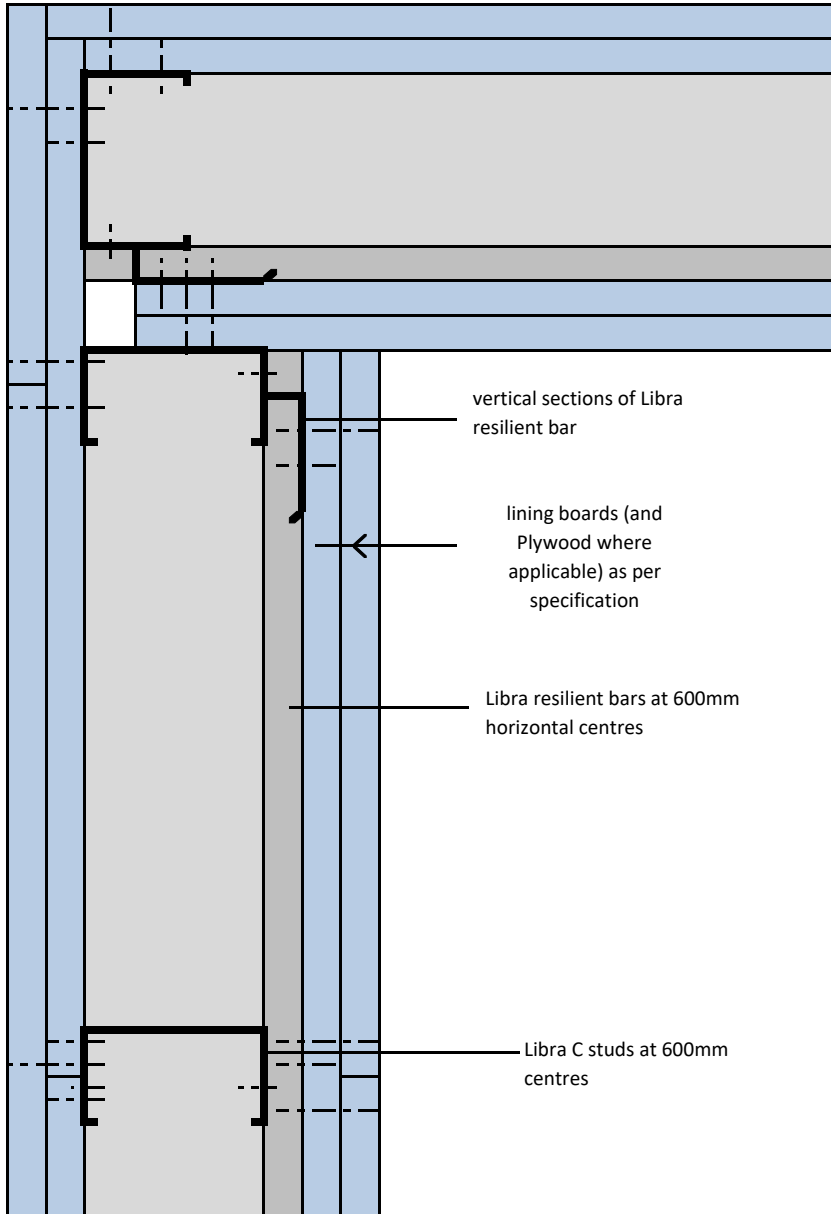
project: Typical Detail

initials: ML

date: 01/03/2017

drg no: ML/TYP/121

resilient bar partition (one side)
internal corner detail



Notes: This drawing should be read in conjunction with the relevant sections of the manufacturers current product literature we would draw your attention to the Construction (Design and Management) Regulations 1994 and the Approved Code of Practice which detail the legal duties of clients, client's agents designers and contractors involved in construction projects.

for discussion purposes only / do not scale



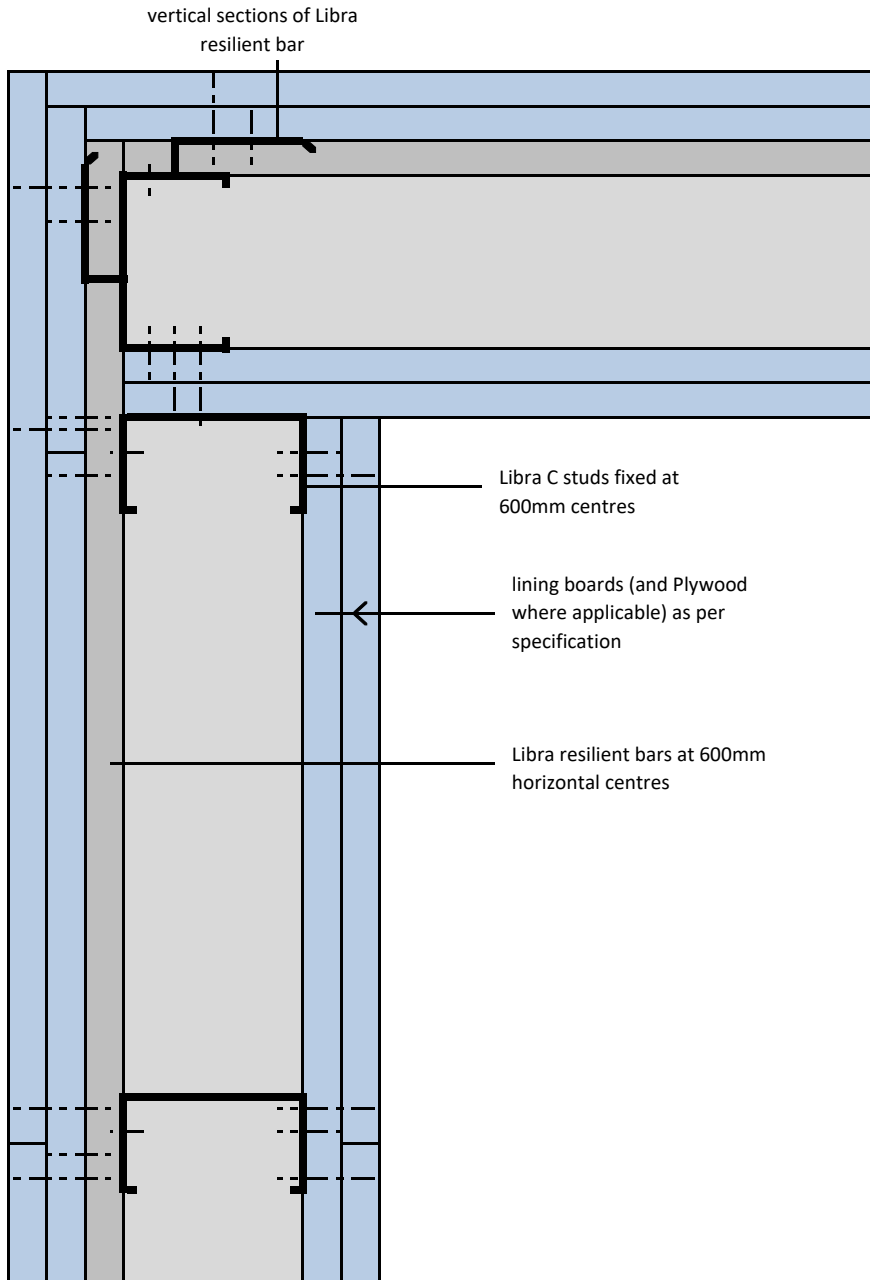
project:	Typical Detail
----------	----------------

initials:
ML

date:
01/03/2017

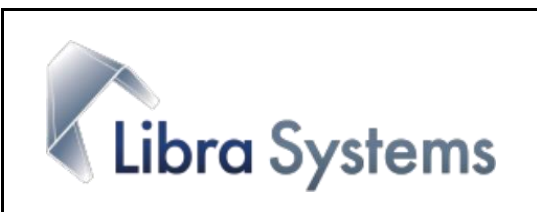
drg no:
ML/TYP/122

resilient bar partition (one side)
external corner detail



Notes: This drawing should be read in conjunction with the relevant sections of the manufacturers current product literature we would draw your attention to the Construction (Design and Management) Regulations 1994 and the Approved Code of Practice which detail the legal duties of clients, client's agents designers and contractors involved in construction projects.

for discussion purposes only / do not scale



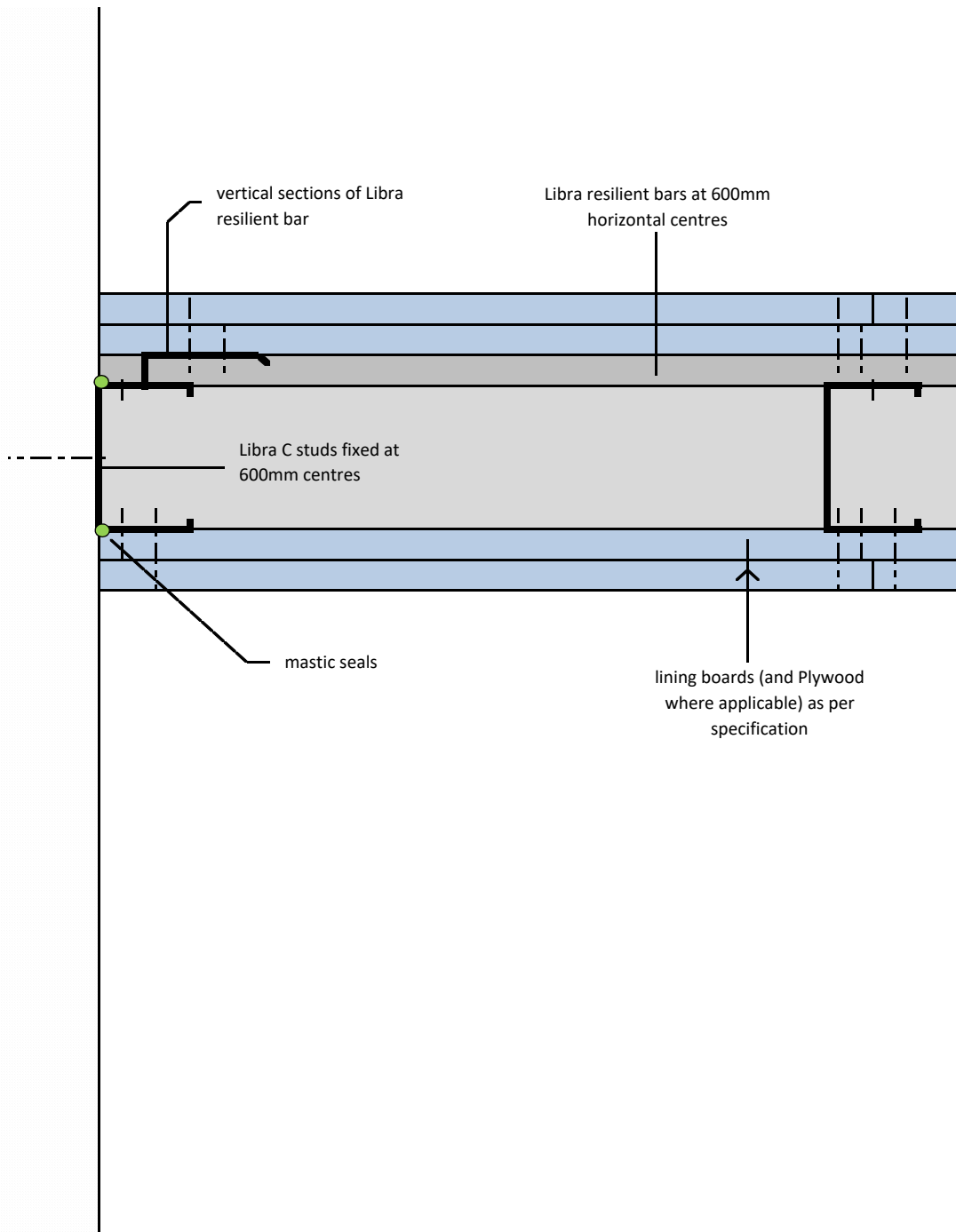
project: Typical Detail

initials: ML

date: 01/03/2017

drg no: ML/TYP/123

**resilient bar partition (one side)
abutment detail**



Notes: This drawing should be read in conjunction with the relevant sections of the manufacturers current product literature we would draw your attention to the Construction (Design and Management) Regulations 1994 and the Approved Code of Practice which detail the legal duties of clients, client's agents designers and contractors involved in construction projects.

for discussion purposes only / do not scale



project: Typical Detail

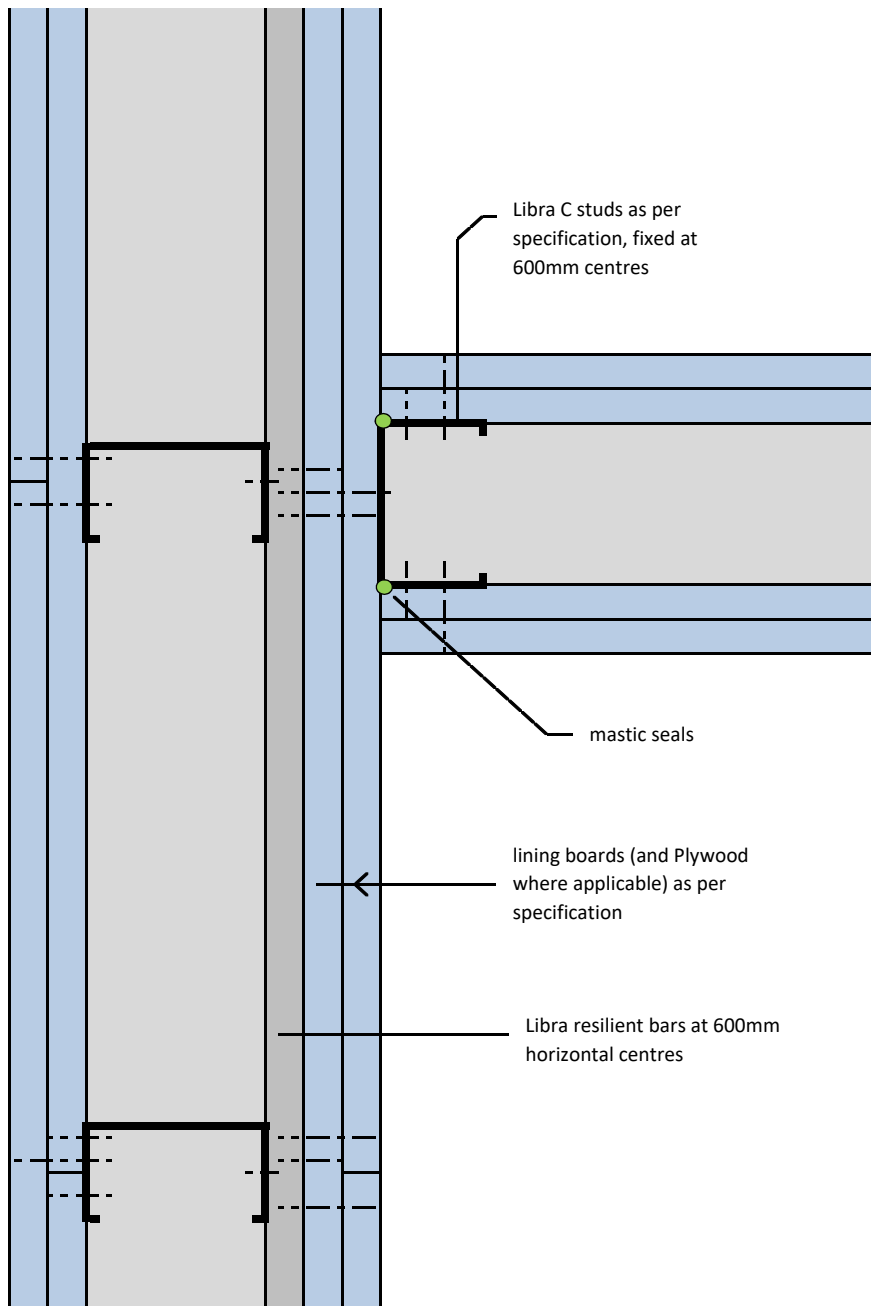
initials:
ML

date:
01/03/2017

drg no:
ML/TYP/124

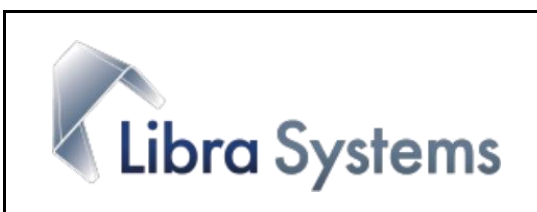
resilient bar partition (one side)

T Junction



Notes: This drawing should be read in conjunction with the relevant sections of the manufacturers current product literature we would draw your attention to the Construction (Design and Management) Regulations 1994 and the Approved Code of Practice which detail the legal duties of clients, client's agents designers and contractors involved in construction projects.

for discussion purposes only / do not scale



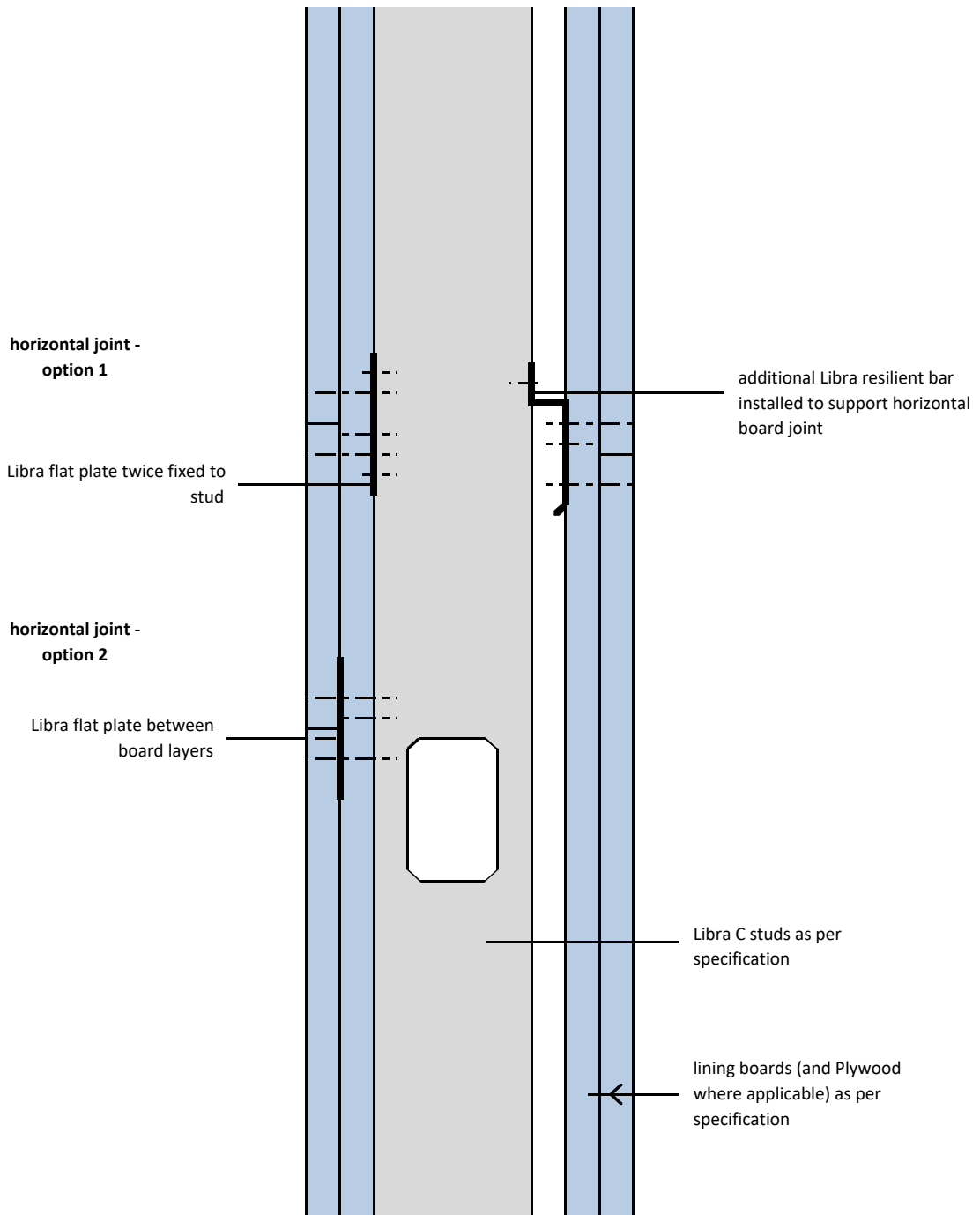
project:	Typical Detail	
----------	----------------	--

initials:
ML

date:
01/03/2017

drg no:
ML/TYP/125

**resilient bar partition (one side)
horizontal joint**



Notes: This drawing should be read in conjunction with the relevant sections of the manufacturers current product literature we would draw your attention to the Construction (Design and Management) Regulations 1994 and the Approved Code of Practice which detail the legal duties of clients, client's agents designers and contractors involved in construction projects.

for discussion purposes only / do not scale



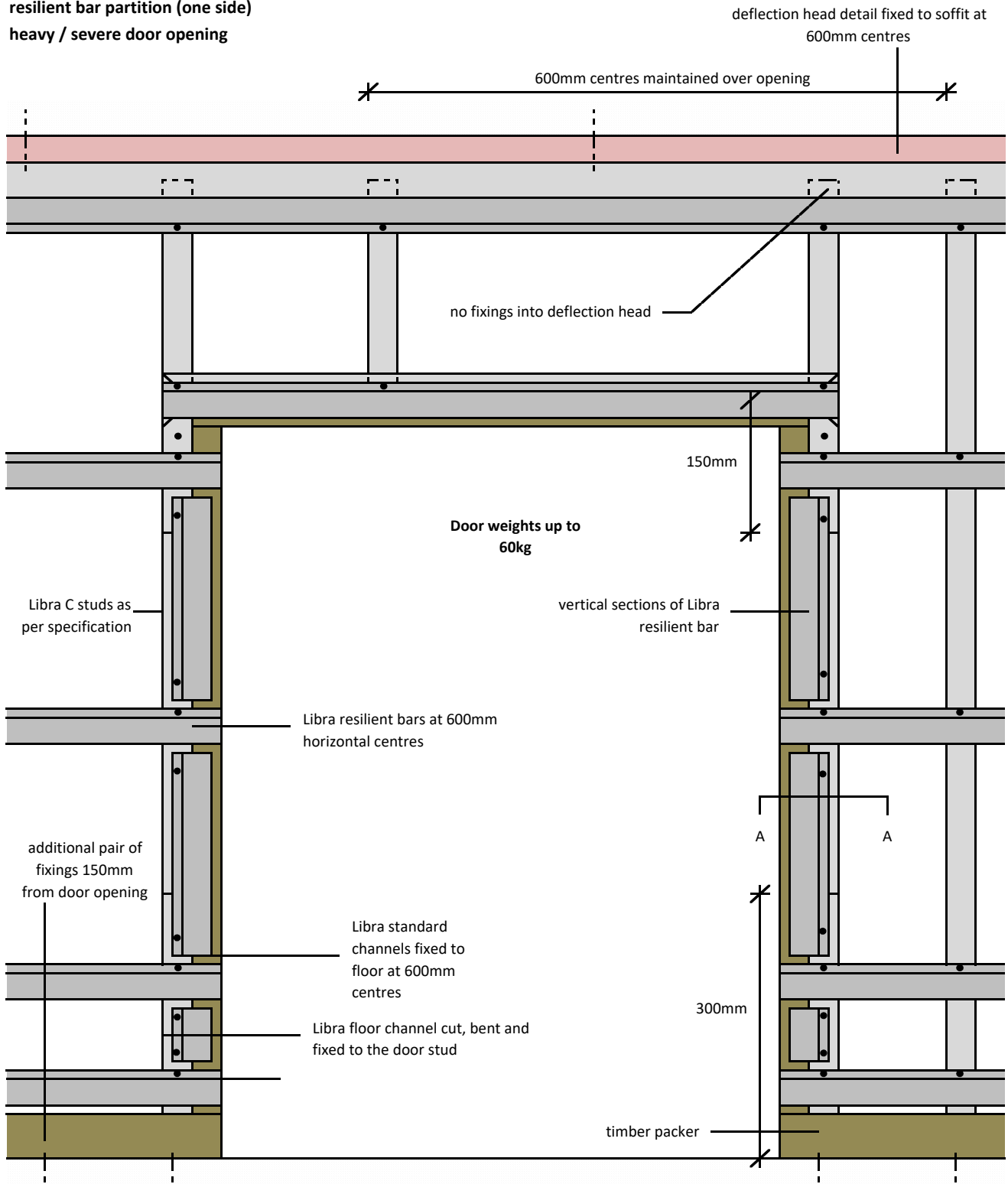
project: **Typical Detail**

initials: **ML**

date: **01/03/2017**

drg no: **ML/TYP/126**

**resilient bar partition (one side)
heavy / severe door opening**



Notes: This drawing should be read in conjunction with the relevant sections of the manufacturers current product literature we would draw your attention to the Construction (Design and Management) Regulations 1994 and the Approved Code of Practice which detail the legal duties of clients, client's agents designers and contractors involved in construction projects.

for discussion purposes only / do not scale



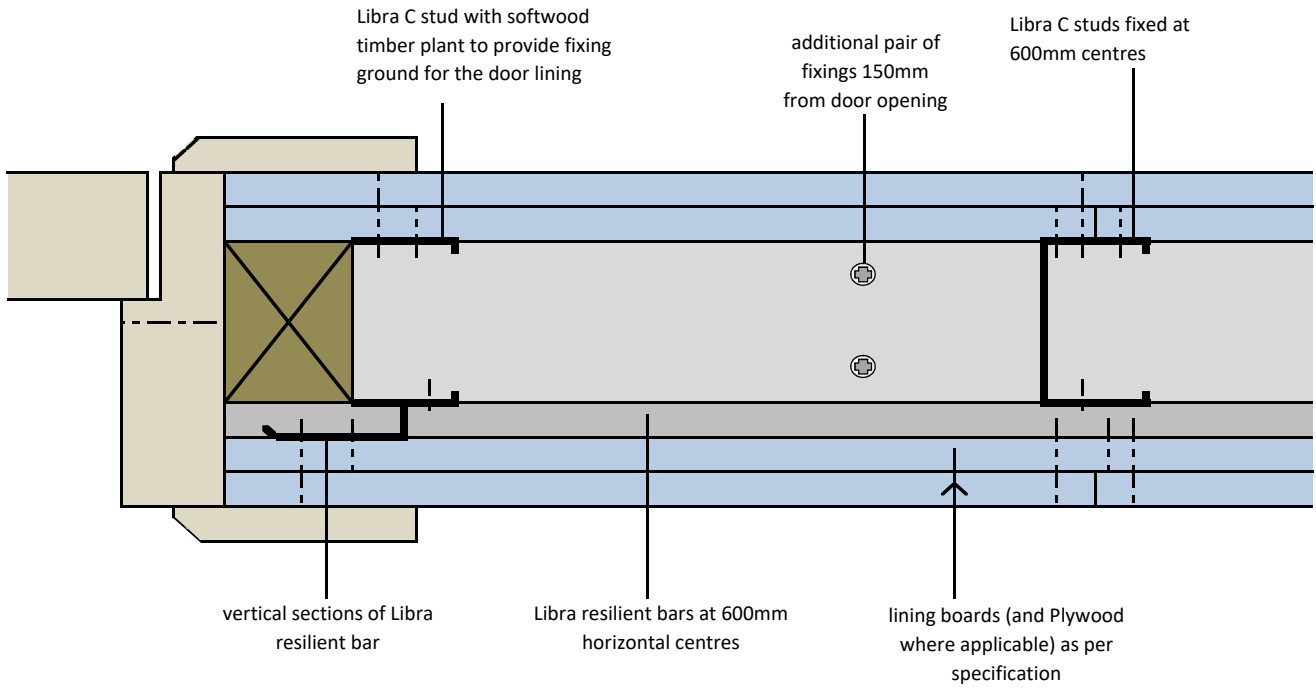
project: Typical Detail

initials: ML

date: 01/03/2017

drg no: ML/TYP/127

resilient bar partition (one side)
heavy / severe door opening - section AA



Notes: This drawing should be read in conjunction with the relevant sections of the manufacturers current product literature we would draw your attention to the Construction (Design and Management) Regulations 1994 and the Approved Code of Practice which detail the legal duties of clients, client's agents designers and contractors involved in construction projects.

for discussion purposes only / do not scale



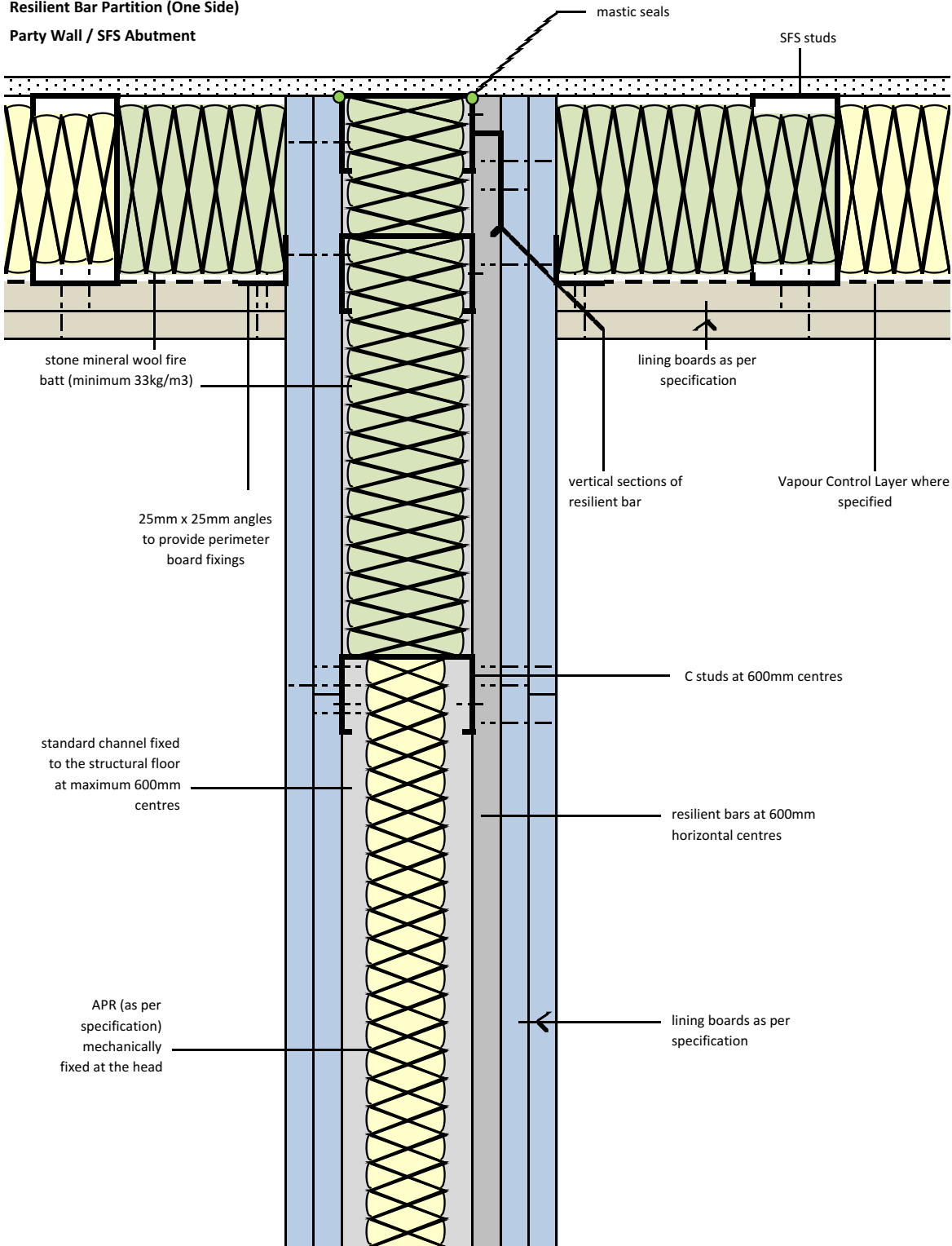
project:
 Typical Detail

initials:
 ML

date:
 01/03/2017

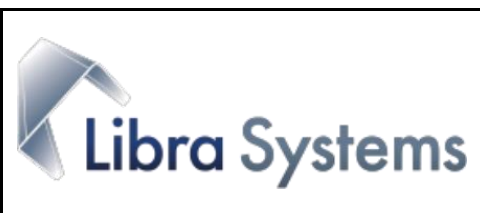
drg no:
 ML/TY/128

Resilient Bar Partition (One Side)
Party Wall / SFS Abutment



Notes: This drawing should be read in conjunction with the relevant sections of the manufacturers current product literature we would draw your attention to the Construction (Design and Management) Regulations 1994 and the Approved Code of Practice which detail the legal duties of clients, client's agents designers and contractors involved in construction projects.

for discussion purposes only / do not scale



project: Typical details

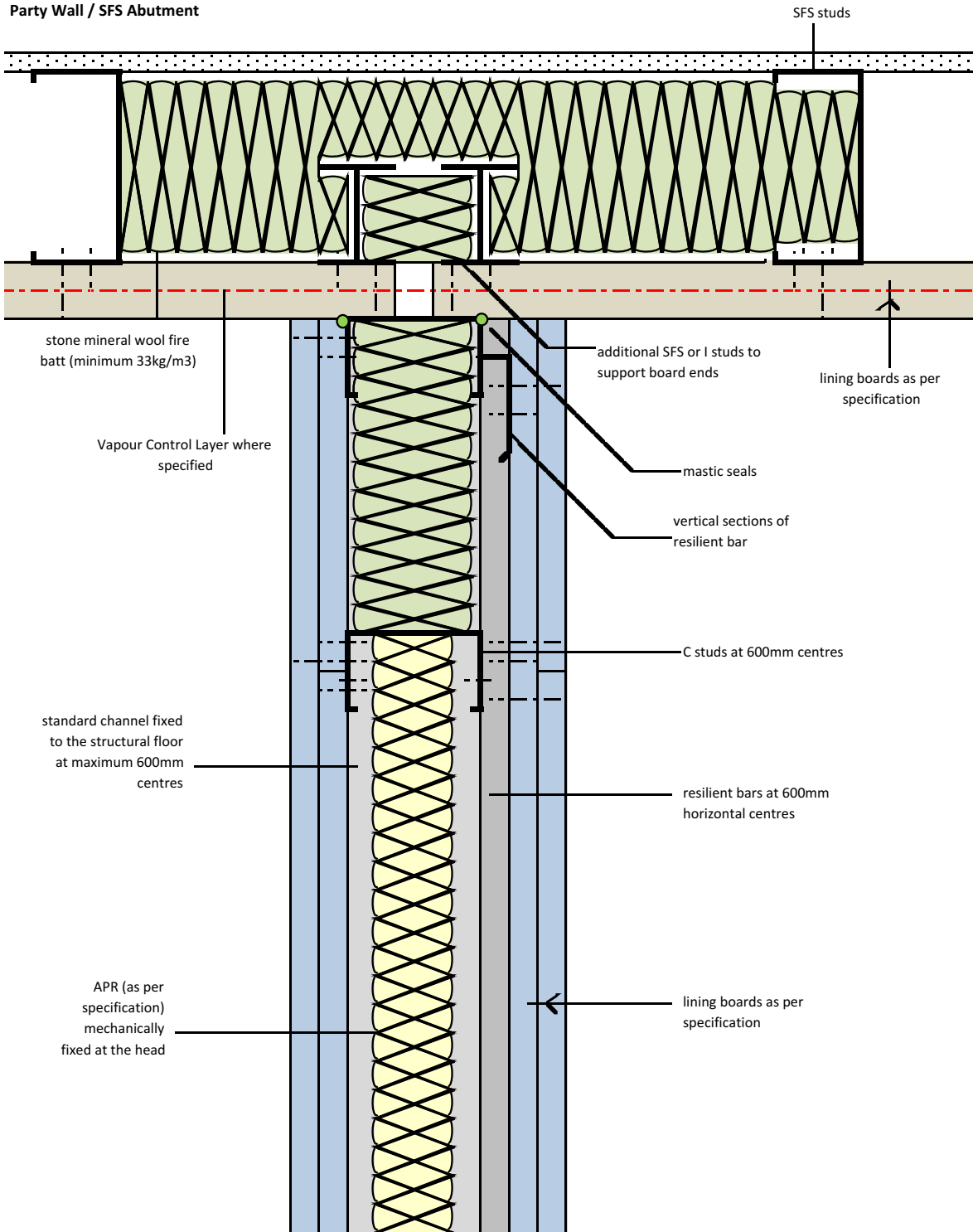
initials: ML

date: 01/01/2018

drg no: ML/TYP/129/SFS/A

Resilient Bar Partition (One Side)

Party Wall / SFS Abutment



Notes: This drawing should be read in conjunction with the relevant sections of the manufacturers current product literature we would draw your attention to the Construction (Design and Management) Regulations 1994 and the Approved Code of Practice which detail the legal duties of clients, client's agents designers and contractors involved in construction projects.

for discussion purposes only / do not scale



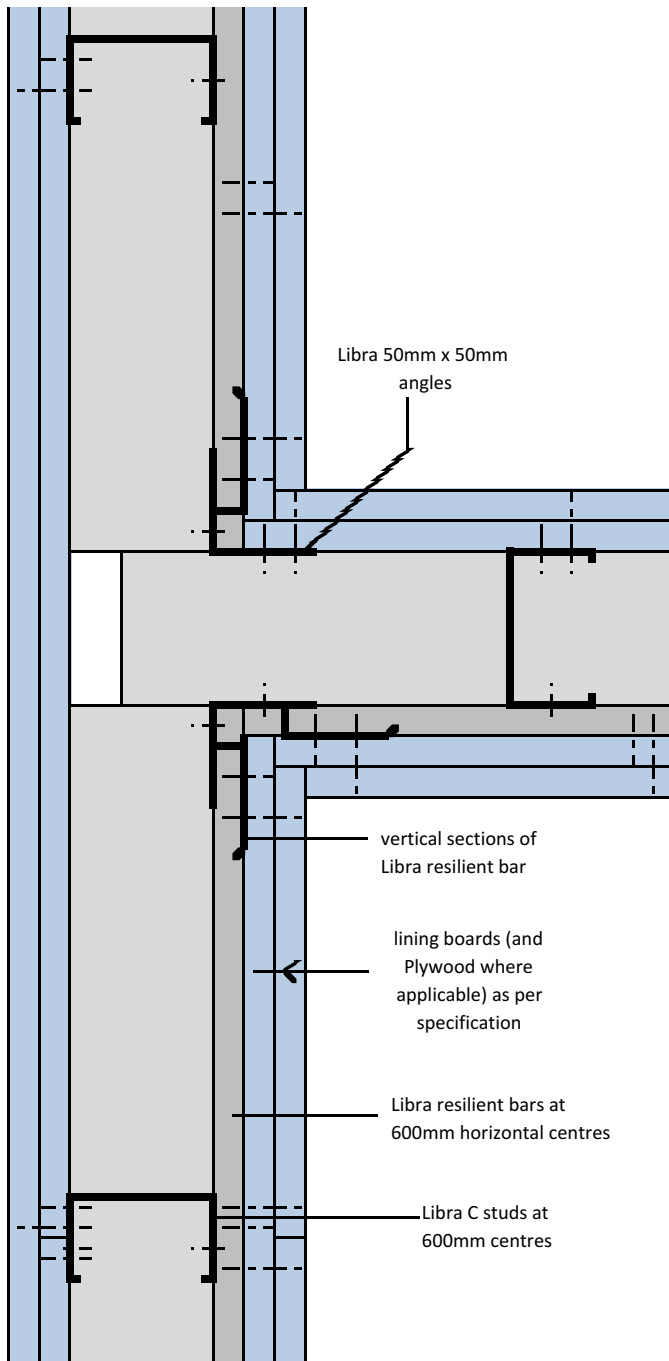
project: Typical details

initials: ML

date: 01/01/2018

drg no: ML/TYP/130/SFS/B

resilient bar partition (one side)
Party Wall T junction



Notes: This drawing should be read in conjunction with the relevant sections of the manufacturer's current product. We would draw your attention to the Construction (Design and Management) Regulations 1994 and the Approved Code of Practice which detail the legal duties of clients, client's agents, designers and contractors involved in construction.

or discussion purposes only / do not scale



project: Typical Detail		
initials: ML	date: 01/01/2018	drg no: ML/TYP/131